



# Hotel offer on

23rd World Dance Championship

in Modern Sport

22-26 October 2025

In Poland



| options<br>(numer of<br>beds) | stars 4* | room types                                      | nights – Luxury Hotel in Warsaw – 36km |     |     |
|-------------------------------|----------|---|--|-----|-----|
|                               |          |   | 3                                      | 4   | 5   |
| <b>1</b><br>(644)             | 1/1      | single bed                                      | 255                                    | 340 | 425 |
|                               | 1/1+1    | 2 single bed                                    | 195                                    | 260 | 325 |
|                               | 1/2      | doubles<br>– single beds                        | 195                                    | 260 | 325 |
|                               | 1/2+1    | triples<br>– 3 single beds                      | 156                                    | 208 | 260 |
|                               | 1/2      | apartments with<br>double bed                   | 195                                    | 260 | 325 |
|                               | 1/2+1    | apartments with<br>double bed + 1<br>single bed | 156                                    | 208 | 260 |

**In the price:**

Breakfast – with breakfast  
airport

Wi-Fi - for free

Parking – for bus free opposite the hotel, for car free

Fridge in every room

Elevator in the building

Check – in from 2 PM

Check - out 10 AM

Distance 5km from the



| options<br>(number of<br>beds) | stars 3* | room types                                      | nights – Hotel in Warsaw – 36km |     |     |
|--------------------------------|----------|---|---------------------------------|-----|-----|
|                                |          |   | 3                               | 4   | 5   |
| 2<br>(223)                     | 1/1      | single bed                                      | 240                             | 320 | 400 |
|                                | 1/1+1    | 2 single bed                                    | 180                             | 240 | 300 |
|                                | 1/2      | doubles<br>– single beds                        | 180                             | 240 | 300 |
|                                | 1/2+1    | triples<br>– 3 single beds                      | 150                             | 200 | 250 |
|                                | 1/2      | apartments with<br>double bed                   | 180                             | 240 | 300 |
|                                | 1/2+1    | apartments with<br>double bed + 1<br>single bed | 150                             | 200 | 250 |
|                                | 1/3      | triples<br>– 3 single beds                      | 150                             | 200 | 250 |
|                                | 1/3+1    | quadruple<br>- 4 single bed                     | 150                             | 200 | 250 |

**In the price:**

Breakfast – with breakfast

Wi-Fi - for free

Parking – for bus free opposite the hotel, for car free

Double and triple room with small kitchenette, fridge in every room

Elevator in the building

Check – in 2 PM

Check - out 10 AM

Distance 5km from the airport



| options<br>(numer of<br>beds) | stars 3* | room types   | nights – Sports Hotel in Kozerki – 5km |     |     |
|-------------------------------|----------|--------------|--|-----|-----|
|                               |          |              | 3                                      | 4   | 5   |
| 3 (53)                        | 1/1      | single bed   | 210                                    | 280 | 350 |
|                               | 1/2      | 2 single bed | 165                                    | 220 | 275 |
|                               | 1/3      | 3 single bad | 144                                    | 192 | 240 |

**In the price:**

Breakfast – with breakfast. Breakfast at the restaurant next to the hotel.

Wi-Fi - for free

Parking – for free

There is in elevator: no

Check – in 3 PM

Check - out 11 AM



| options<br>(number of<br>beds) | stars 3* | room types                                      | nights – Hotel in Żyrardów – 15km |     |     |
|--------------------------------|----------|---|-----------------------------------|-----|-----|
|                                |          |   | 3                                 | 4   | 5   |
| 4<br>(87)                      | 1/1      | single bed                                      | 210                               | 280 | 300 |
|                                | 1/2      | doubles<br>– single beds                        | 141                               | 188 | 235 |
|                                | 1/3      | triples<br>– 3 single beds                      | 129                               | 172 | 215 |
|                                | 1/2+1    | apartments with<br>double bed + 1<br>single bed | 129                               | 172 | 215 |

**In the price:**

Breakfast – with breakfast

Wi-Fi - for free

Parking – for free on the street

Elevator in the building

Check – in 3 PM

Check - out 12 AM



| options<br>(numer of<br>beds) |     | room types                  | nights – Apartments in Radziejowice – 9km |     |     |
|-------------------------------|-----|-----------------------------|---|-----|-----|
|                               |     |                             | 3   | 4   | 5   |
| 5<br>(44)                     | 1/1 | single bed                  | 216                                       | 288 | 360 |
|                               | 1/2 | doubles<br>– single beds    | 156                                       | 208 | 260 |
|                               | 1/3 | triples<br>– 3 single beds  | 135                                       | 180 | 225 |
|                               | 1/4 | quadruple<br>- 4 single bed | 114                                       | 152 | 190 |

**In the price:**

Breakfast – with breakfast

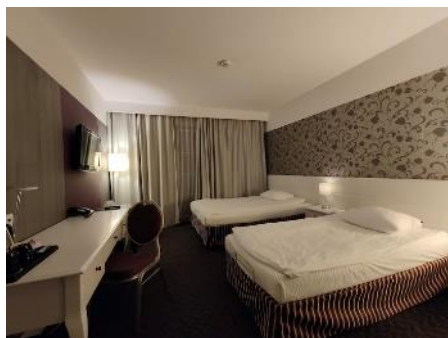
Wi-Fi - for free

Parking – for free

There is in elevator: no

Check – in 2 PM

Check - out 11AM



| options<br>(number of<br>beds) | stars 3* | room types                 | nights – Hotel in Oltarzew – 25km |     |     |
|--------------------------------|----------|----------------------------|-----------------------------------|-----|-----|
|                                |          |                            | 3                                 | 4   | 5   |
| 6<br>(130)                     | 1/2      | doubles<br>– single beds   | 165                               | 220 | 275 |
|                                | 1/3      | triples<br>– 3 single beds | 135                               | 180 | 225 |

**In the price:**

Breakfast – with breakfast

Wi-Fi - for free

Parking – for free

Elevator in the building

Check – in 3 PM

Check - out 11 AM

**The above mentioned price rates are per person.**

Reservations are accepted until 31 July 2025r.

Reservation is confirmed only after paying a 30% deposit.

You must pay full price until 30 September 2025r.

During reservation, please specify what type of bed (single or double) you desire if the hotel offers different choices.

Email for hotels reservations : [Urszula.Dziekiarek@idfdance.org](mailto:Urszula.Dziekiarek@idfdance.org)

Discount possible for six nights.

We offer assistance in organizing transport from the airport to the hotel or from the hotel to the sports and entertainment hall. Those interested, please contact us by e-mail:

[Urszula.Dziekiarek@idfdance.org](mailto:Urszula.Dziekiarek@idfdance.org)